

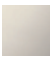





ST 110 201 5892



- 235mm projection
- pivotable spout 360°
- air-enriched flow and spray flow
- height of mixer 370 mm
- test
- height up to aerator 212 mm
- hole diameter spout 35 mm
- hole diameter valve 32 mm
- profi spray hole diameter 30mm
- automatic spout/shower diverter
- sprayface with anti-scaling system
- max. flow 7 l/min at 3 bar flow pressure
- lead-free
- This product can help a building meet the requirements of Green Building Rating Systems, e.g. LEED®, BREEAM®, DGNB

| | | |
|--|-----------------------|--------------------|
|  | Chrome | ST 110 201 5892-00 |
|  | Brushed Platinum | ST 110 201 5892-06 |
|  | Platinum | ST 110 201 5892-08 |
|  | Dark Chrome | ST 110 201 5892-19 |
|  | Brushed Chrome | ST 110 201 5892-93 |
|  | Brushed Dark Platinum | ST 110 201 5892-99 |

Individual components of this set

You need the following components for this set



1x 20 815 892-00



1x 27 789 970-00



TARA Three-hole mixer with profi spray set - Chrome

TARA

ST 110 201 5892

ST 110 201 5892



- 235mm projection
- pivotable spout 360°
- air-enriched flow
- height of mixer 370 mm
- height up to aerator 212 mm
- hole diameter spout 35 mm
- hole diameter valve 32 mm
- max. flow 7 l/min at 3 bar flow pressure
- lead-free
- This product can help a building meet the requirements of Green Building Rating Systems, e.g. LEED®, BREEAM®, DGNB

| | | |
|--|-------------------------------|---------------|
|  | Chrome | 20 815 892-00 |
|  | Brushed Platinum | 20 815 892-06 |
|  | Platinum | 20 815 892-08 |
|  | Durabass (23kt Gold) | 20 815 892-09 |
|  | Dark Chrome | 20 815 892-19 |
|  | Brushed Durabass (23kt Gold) | 20 815 892-28 |
|  | Matte Black | 20 815 892-33 |
|  | Brushed Champagne (22kt Gold) | 20 815 892-46 |
|  | Champagne (22kt Gold) | 20 815 892-47 |
|  | Brushed Chrome | 20 815 892-93 |
|  | Brushed Dark Platinum | 20 815 892-99 |

Recommended miscellaneous

Strainer waste with control handle - Chrome 10 710 970-00

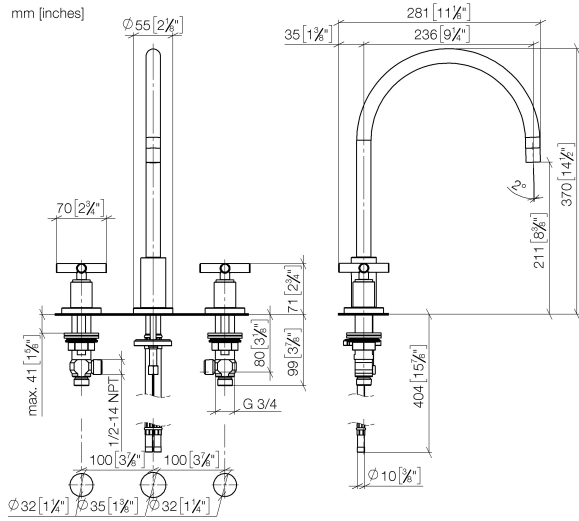


Recommended miscellaneous

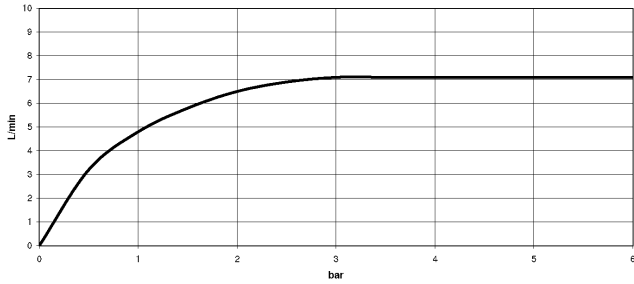
Dispenser with rosette - Chrome 82 444 970-00



ST 110 201 5892



Flow rate chart



Certificates

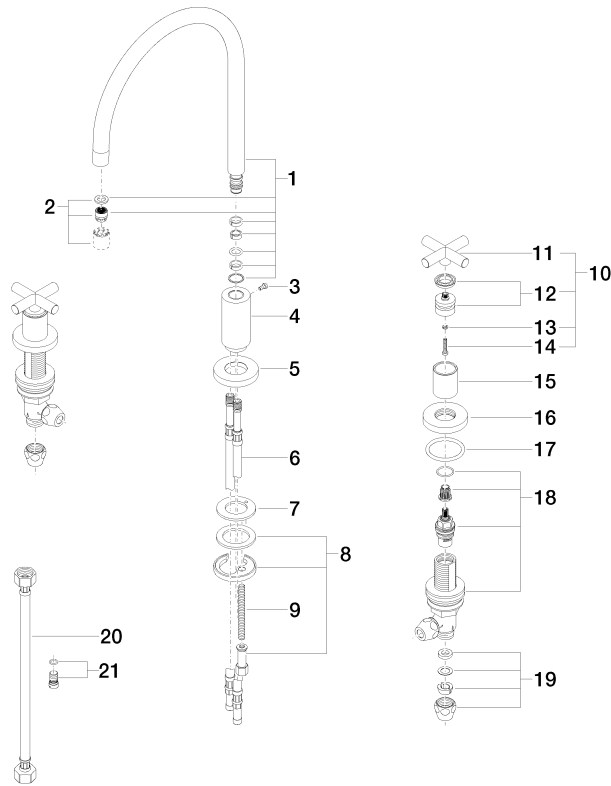
WRAS_2107052.

ETA_18514.

LGA_19166.

GDV_0400289.

ST 110 201 5892



Spare parts list

| No. | Item Number | Name | Quantity used | Delivery time |
|--|--------------------|---|---------------|---------------|
| 1 | 90 28 22 226 01-00 | spout | 1 | 10 |
| 2 | 90 23 01 028 03-00 | aerator | 1 | 10 |
| 3 | 09 30 30 057 90 | screw | 1 | 2 |
| 4 | 09 11 10 088 10-00 | connection | 1 | 10 |
| 5 | 09 28 10 140-00 | ring | 1 | 10 |
| 6 | 04 30 04 064 00 90 | hose | 2 | 60 |
| 7 | 09 14 05 047 90 | seal | 1 | 2 |
| 8 | 04 30 11 038 00 90 | fixing set | 1 | 2 |
| 9 | 09 31 11 011 90 | pin | 1 | 2 |
| 10 | 90 20 89 010 10-00 | handle | 2 | 10 |
| 11 | 09 20 89 010-00 | handle | 2 | 60 |
| 12 | 90 12 12 007 00-00 | base | 2 | 10 |
| 13 | 90 30 11 029 00 90 | disc | 2 | 2 |
| 14 | 90 30 30 075 00 90 | screw | 2 | 2 |
| 15 | 09 21 02 140-00 | sleeve | 2 | 10 |
| 16 | 09 27 89 105-00 | rosette | 2 | 10 |
| 17 | 90 14 10 043 00 90 | seal | 2 | 2 |
| 18 | 90 17 11 040 51 90 | side panel | 2 | 2 |
| 19 | 90 23 30 040 00-00 | threaded connector | 4 | 10 |
| 20 | 12 501 970 90 | High pressure hose 1/2" x 1/2" x 300 mm - | 2 | - |
| Spare part can no longer be ordered, please order the replacement item | | | | |
| 21 | 04 31 20 046 10 92 | set | 1 | 2 |

ST 110 201 5892



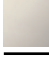


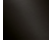


Fits: ELIO, TARA, TARA ULTRA

- spray flow
- automatic diverter for spout/Profi spray set
- height of mixer 665 mm
- individual rosette diameter 55mm
- profi spray hole diameter 30mm
- sprayface with anti-scaling system
- lead-free

Can only be combined with 33826790, 32800790, 33826888, 32815888, 20815892, 33826875.

Intrinsic protection against back flow.

| | | |
|--|-----------------------|---------------|
|  | Chrome | 27 789 970-00 |
|  | Brushed Platinum | 27 789 970-06 |
|  | Platinum | 27 789 970-08 |
|  | Dark Chrome | 27 789 970-19 |
|  | Brushed Chrome | 27 789 970-93 |
|  | Brushed Dark Platinum | 27 789 970-99 |



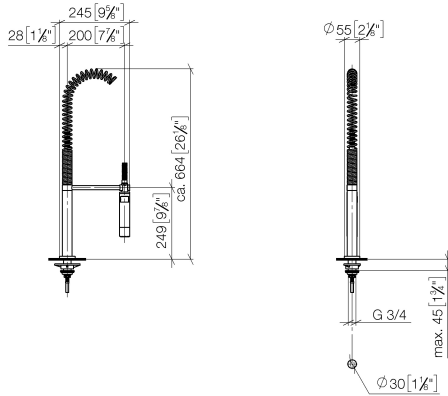
TARA Three-hole mixer with profi spray set - Chrome

TARA

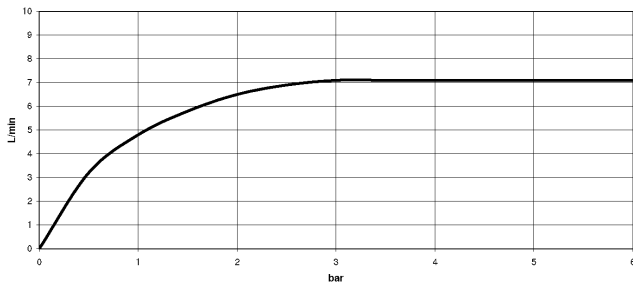
ST 110 201 5892

ST 110 201 5892

mm [inches]
M 1:10



Flow rate chart

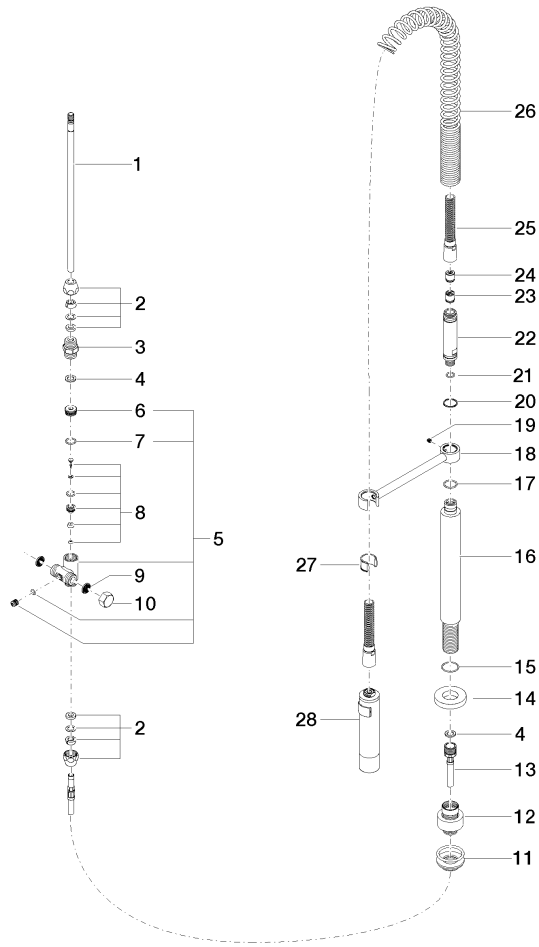


Certificates

LGA_18901.

LGA_28304.

Belgaqua_22_277_2
7_3.



ST 110 201 5892

Spare parts list

| No. | Item Number | Name | Quantity used | Delivery time |
|-----|--------------------|---------------------|---------------|---------------|
| 1 | 04 24 02 046 01-07 | pipe | 1 | 10 |
| 2 | 90 23 30 040 00-00 | threaded connector | 2 | 10 |
| 3 | 90 24 03 168 00 90 | nipple | 1 | 2 |
| 4 | 90 14 20 002 00 90 | seal | 2 | 2 |
| 5 | 90 17 09 046 10 90 | diverter | 1 | 2 |
| 6 | 09 24 04 112 10 90 | nipple | 1 | 2 |
| 7 | 90 14 10 033 00 90 | seal | 1 | 2 |
| 8 | 90 21 10 031 10 90 | diverter | 1 | 2 |
| 9 | 09 23 01 039 90 | sieve | 2 | 2 |
| 10 | 04 21 02 006 00 92 | cap | 1 | 2 |
| 11 | 04 23 10 004 03 90 | fixing set | 1 | 2 |
| 12 | 12 780 970 90 | Extension set - | 1 | 60 |
| 13 | 09 30 04 067 90 | hose | 1 | 2 |
| 14 | 09 28 10 064-00 | rosette | 1 | 10 |
| 15 | 09 14 10 120 90 | seal | 1 | 2 |
| 16 | 09 11 10 066 10-00 | connection | 1 | 60 |
| 17 | 09 14 10 031 90 | seal | 1 | 2 |
| 18 | 04 17 20 014 00-00 | holder | 1 | 10 |
| 19 | 09 31 11 049 90 | pin | 1 | 2 |
| 20 | 09 14 15 012 90 | ring | 1 | 2 |
| 21 | 09 14 10 003 90 | seal | 1 | 2 |
| 22 | 09 30 01 067 10-00 | adaptor | 1 | 10 |
| 23 | 90 23 01 141 00 90 | back-flow preventer | 1 | 2 |
| 24 | 09 23 01 046 90 | back-flow preventer | 1 | 2 |
| 25 | 90 30 02 065 00-00 | hose | 1 | 10 |
| 26 | 09 16 02 034 90 | spring | 1 | 2 |
| 27 | 90 18 40 035 00 90 | sleeve | 1 | 2 |
| 28 | 04 12 11 094 10-00 | shower | 1 | 10 |



TARA Three-hole mixer with profi spray set - Chrome

TARA

ST 110 201 5892